

### S3 Slit Lamp Microscope (3 Step Magnification, LED Lamp)

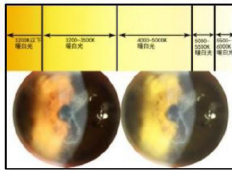
**Features:**

1. Outstanding Optic Quality Ensure the Comfortable View
2. Parallel type, Galilean system
3. LED Illumination, long life time
4. Haag-Streit type slit lamp with broad beam, wide field and high depth of field
5. 3 step magnification
6. Interface for laser and applanation tonometer reserved



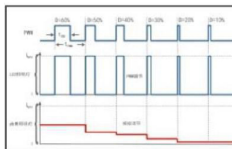
**Technical Specifications:**

Model	S3
Illumination Type	Haag Streit Type
Illumination Source	<b>Imported LED</b>
Microscope Type	Parallel type, Galilean system
Magnification changer	Revolving drum
Eyepiece	12.5X
Magnification	10X 16X 25X
Visual field Diameter	6X:33mm10x:22mm 16X:14mm 25X:8.5mm 40X:5.5mm
Diopter adjustment	-7D~+7D
Pupil range	52mm~82mm
brightness	continuously adjustable
Slit image width	0mm~14mm continuous
Slit image length	1mm~14mm continuous
Slit image angle	0~180 continuously rotation
illumination tilting	5° 10° 15° 20°
Slit aperture size	φ14 φ10 φ5 φ3 φ1 φ0.2 (mm) & 1~14mm continuously
Filter	Heat absorption, Grey, Redf ree(Green), Cobalt blue
Fixation	Red LED 3.5V
Max Illumination	600000 Lux
Background illumination	None
Input voltage	70VA
Input power	100V~240V 48~62HZ
External packing	Carton box
Dimension	740"650"450mm
G/weight	23kg



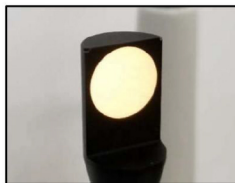
**Warm Light Source**

3000K color temperature light source with the best color reduction



**PWM brightness control**

Using PWM technology to control the brightness of the light source and keep color temperature stability



Ø 14mm Aperture



Continuously adjustable illumination



**Revolving Drum**

S3: 3 step magnification  
S5: 5 step magnification



**Separately Metal Plate:**

The slit lamp will be mounted on the metal plate. The metal plate can be put on other table board.

Easy Installation and Movement.

**S5 Slit Lamp Microscope (5 step magnification, LED Lamp)**

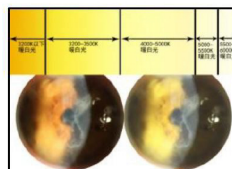
**Features:**

1. Outstanding Optic Quality Ensure the Comfortable View
2. Parallel type. Galilean system
3. LED Illumination, long life time
4. 5 step magnifications
5. Haag-Streit type slit lamp with broad beam, wide field and high depth of field
6. interface for laser and applanation tonometer reserved



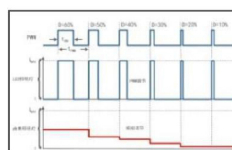
**Specifications:**

Model	S5
Illumination Type	Haag Streit Type
Illumination Source	<b>Imported LED Lamp</b>
Max Illumination Intensity	60000 Lux
Microscope Type	Parallel type, Galilean system
Magnification changer	Revolving drum
Eyepiece	12.5X
Magnification	6X 10X 16X 25X 40X
Visual field Diameter	6X:33mm 10x:22mm 16X:14mm 25X:8.5mm 40X:5.5mm
Diopter adjustment	-7D~+7D
Pupil range	52mm~82mm
brightness	continuously adjustable
Slit image width	0mm~14mm continuous
Slit image length	1mm~14mm continuous
Slit image angle	0~180 continuously rotation
illumination tilting	5° 10° 15° 20°
Slit aperture size	φ14 φ10 φ5 φ3 φ1 φ0.2 (mm) & 1~14mm continuously
Filter	Heat absorption, Grey, Redfree(Green), Cobalt blue
Fixation	Red LED 3.5V
Image collector	None
Background illumination	None
Input voltage	70VA
Input power	100V~240V 48~62HZ
External packing	Carton box
Dimension	740"650"450mm
G/weight	23kg



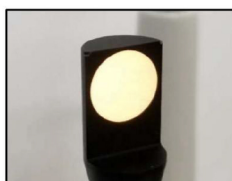
**Warm Light Source**

3000K color temperature light source with the best color reduction



**PWM brightness control**

Using PWM technology to control the brightness of the light source and keep color temperature stability



∅ 14mm Aperture



Continuously adjustable illumination



**Revolving Drum**

S3: 3 step magnification  
S5: 5 step magnification



**Separately Metal Plate:**

The slit lamp will be mounted on the metal plate. The metal plate can be put on other table board.  
Easy Installation and Movement.

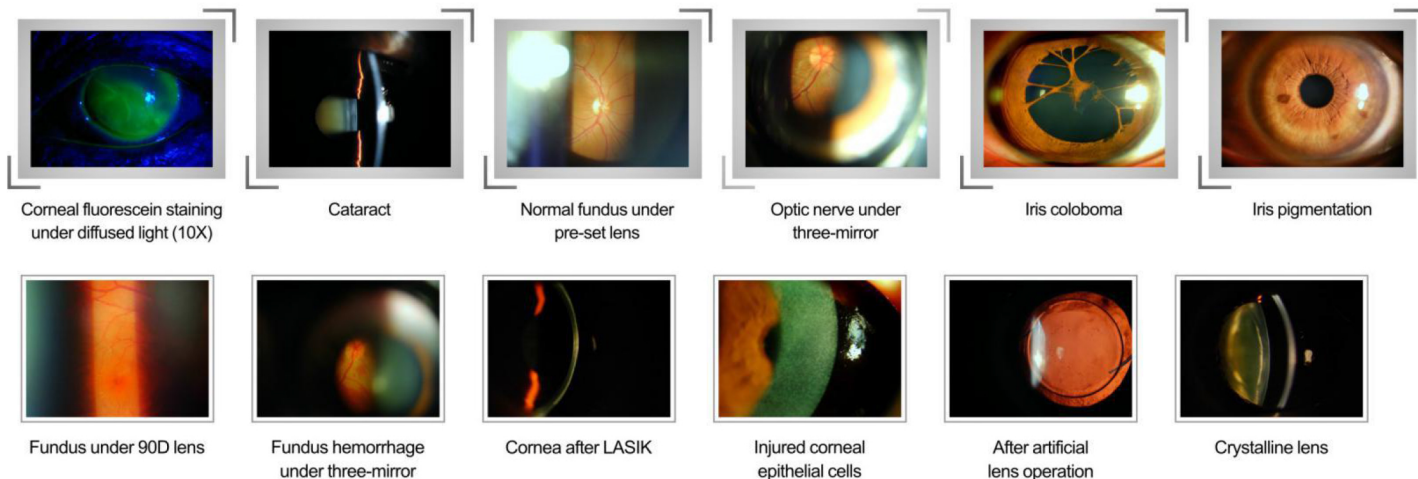
**S5D High End Digital Slit Lamp With DSLR Digital Camera**

**Features:**

1. Outstanding Optic Quality Ensure the Comfortable View
2. Precision Machining Makes the Smooth and Flexible Movement
3. Professional & Multi-functional Software With Simple Humanized Human-computer Interface & Easy Operation
4. Have both image capturing function and video capturing function
- Image processing for better Symptoms Diagnose
5. Backup patient data base easily guarantee data safety
6. Highest Quality Images Captured Which Impressive Every User
7. Aspecial designed black cross in right eyepiece which enable to synchronise the image sharpness in eyepiece



**S5D**



Corneal fluorescein staining under diffused light (10X)

Cataract

Normal fundus under pre-set lens

Optic nerve under three-mirror

Iris coloboma

Iris pigmentation

Fundus under 90D lens

Fundus hemorrhage under three-mirror

Cornea after LASIK

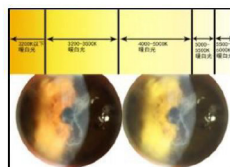
Injured corneal epithelial cells

After artificial lens operation

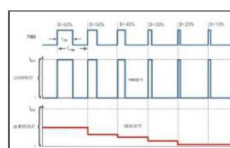
Crystalline lens

**Technical Specifications:**

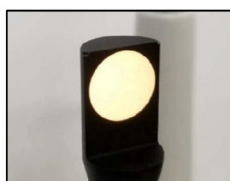
Microscope Type	Parallel
Magnification changer	Revolving drum
Eyepiece	12.5X
Illumination Source	<b>Imported RED LED</b>
Max Illumination Intensity	60000 Lux
Total magnification	6X 10X 16X 25X 40X
Diameter of Vision field	φ37 φ23 φ14 φ8.7 φ5.7mm (φ23 φ14 φ8.7optional)
Diopter adjustment	-7D~+7D
Slit image width	0mm~14mm continuous
Slit image length	1mm~14mm continuous
Diameter of aperture	Φ14mm                      Φ10mm Φ5mm                        Φ3mm Φ1mmΦ0.2mm
Slit angle	0~180 continuously rotation
Illumination tilting	5° 10° 15° 20° totally 4 step
Filter	Heat absorption, Grey,red freer(Green), Cobalt blue
Illumination	12V 50W Halogen Bulb
Fixation	Red LED 3.5V
Power	In put vottage100~240V



**Warm Light Source**  
3000K color temperature light source with the best color reduction



**PWM brightness control**  
Using PWM technology to control the brightness of the light source and keep color temperature stability



**∅ 14mm Aperture**



**Continuously adjustable illumination**



**Revolving Drum**  
S3: 3 step magnification  
S5: 5 step magnification

