

VX 650

The unique  
eye health monitor





# Visionix: revolutionizing the future of visual healthcare

Visionix VX 650 reinvents ocular assessment by introducing the first and only solution allowing eye care professionals (ECPs) to deliver a comprehensive eye exam at the push of a button. It's a unique combination of technologies to monitor both anterior and posterior segments in a single device. The highly automated Visionix VX 650 allows a moderately trained user to study a wide range of visual pathologies.





Visionix VX 650: a single multi-modal instrument for complete detection and follow-up of major anterior and posterior ocular pathologies.

## Increased level of eyecare without delay

Reduce overall patient movement and time in the pre-test room while providing a comprehensive examination to every patient in combination with Eye Refract.

## A comprehensive exam

From the cornea to the retina, it allows ECPS to detect all major defects and pathologies, including dry-eye, keratoconus, cataracts, glaucoma, nevus, diabetic retinopathy, retinal hemorrhage and more.

## Communication

Nexus, our new digital health platform, is specifically designed to connect all eye care professionals, even remotely, allowing you to bring ophthalmologists' expertise to patients in any eye screening location.

Efficient data management:

Results available for GDPR (General Data Protection Regulation) and HIPAA (Health Insurance Portability and Accountability Act) compliant data sharing, for either local or remote review.



Visionix combo screening and refraction system

# Increased level of eyecare without delay

Reduce overall patient movement and time in the pre-test room while providing a comprehensive examination to every patient in combination with Eye Refract.

## **EYE REFRACT COMPUTER-ASSISTED BINOCULAR REFRACTION**

The 2nd generation of Eye Refract utilizes unique innovative technology that performs an automatic binocular refraction powered by computer-generated algorithms.

## **VX 650 AUTOMATED ANTERIOR AND POSTERIOR SCREENING**

The VX 650 offers anterior and posterior segment screening in a single device at the touch of a button.

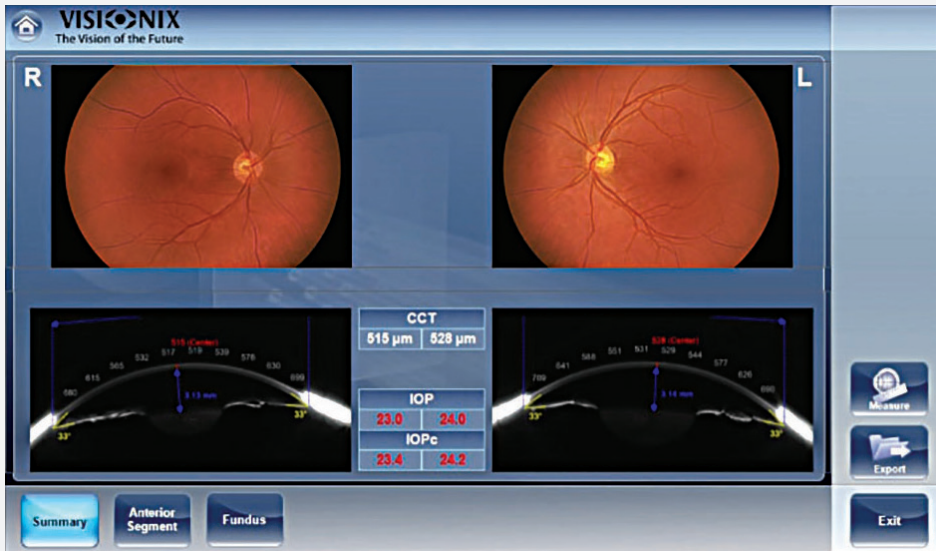
- Accurate, comprehensive eye exam
- Automated anterior and posterior screening
- Accuracy and reproducibility of the findings are non-operator dependant
- Reduces overall patient movement
- Reduces the anxiety of adding a new location
- Small footprint within 2m<sup>2</sup>



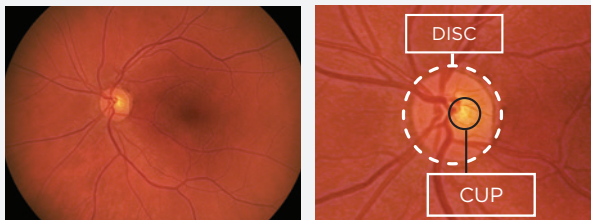


**POSTERIOR SEGMENT** NON MYDRIATIC FUNDUS CAMERA, AIR PUFF TONOMETER

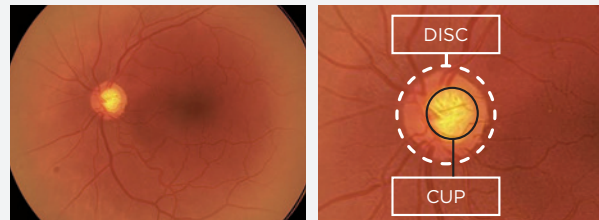
All data to study, evaluate and monitor glaucoma



Glaucoma summary screen with iridocorneal angle measurement, IOP, IOPc

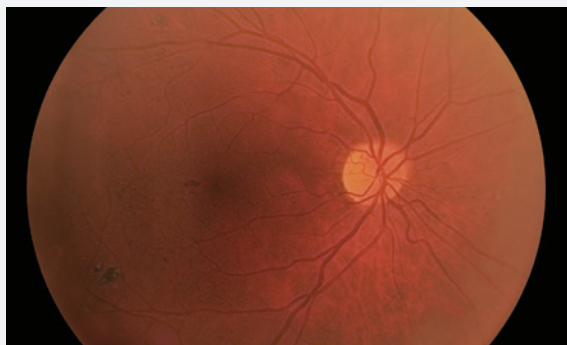


Healthy eye fundus picture



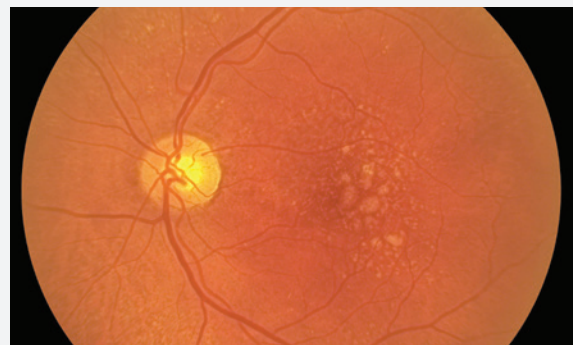
Glaucoma patient fundus picture

All data to study, Evaluate and Monitor Diabetic retinopathy



Diabetic retinopathy fundus picture

All data to study, Evaluate and Monitor Age-related Macular Degeneration



Macular degeneration

# Communication

## Comprehensive eye report through Nexus from VX 650

VISIONIX DEMO FRANCE  
RUE ROGER BONNET 2  
PONT-DE-L'ARCHE - - - -



VISIT: MEAS\_ALL VX650

### CLIENT

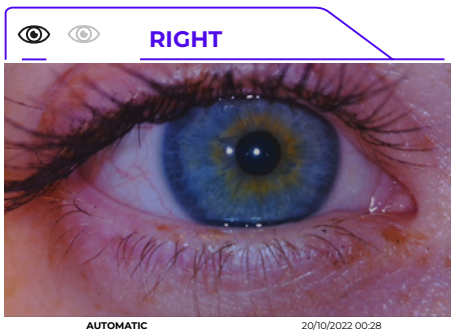
<b>Name:</b>	<b>Birth date:</b>	2001-11-02	<b>Ethnicity:</b>	Caucasian
<b>Surname:</b>	<b>Gender:</b>	M	<b>Patient ID:</b>	

RIGHT	APERTURE	SPHERE	CYLINDER	AXIS
DAY	3.00 mm	-0.25 DS	-0.75 DC	171°
NIGHT	5.07 mm	-0.75 DS	-0.50 DC	170°

LEFT	APERTURE	SPHERE	CYLINDER	AXIS
DAY	3.00 mm	0.50 DS	-0.75 DC	20°
NIGHT	4.24 mm	0.50 DS	-0.75 DC	16°

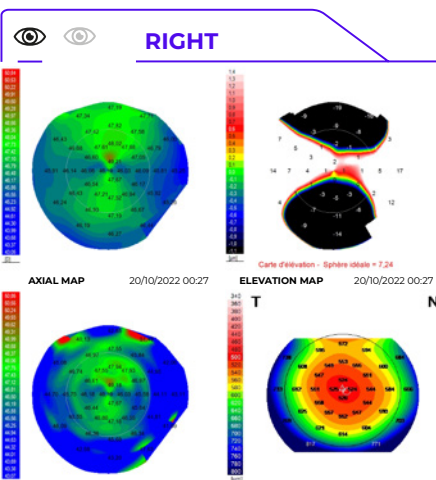
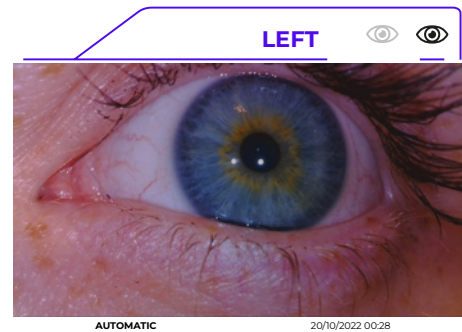
Keratometry Exam date: 20/10/2022

EYE	K1	K2	CYL	AVG
RIGHT	46.04 D (7.33 mm) @173°	47.80 D (7.06 mm) @83°	-1.75D @173°	46.91 D (7.20 mm)
LEFT	46.17 D (7.31 mm) @8°	47.47 D (7.11 mm) @98°	-1.25D @8°	46.81 D (7.21 mm)



**ANTERIOR**

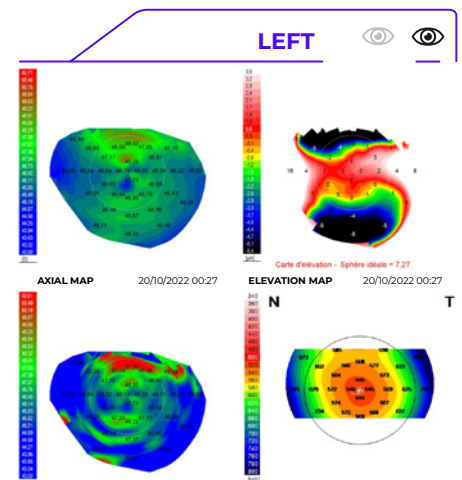
Exam date: 20/10/2022



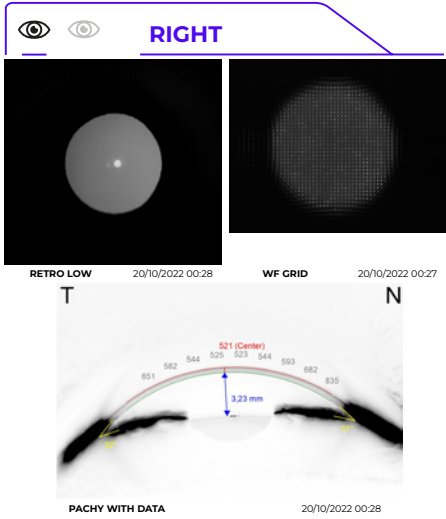
RIGHT	CORNEA	LEFT
22 %	KPI	44 %
-1.07	SYMMETRY INDEX	-1.57
0.89	ECCENTRICITY	0.80

Exam date: 20/10/2022

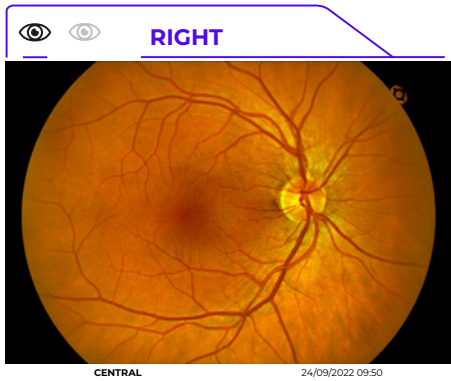
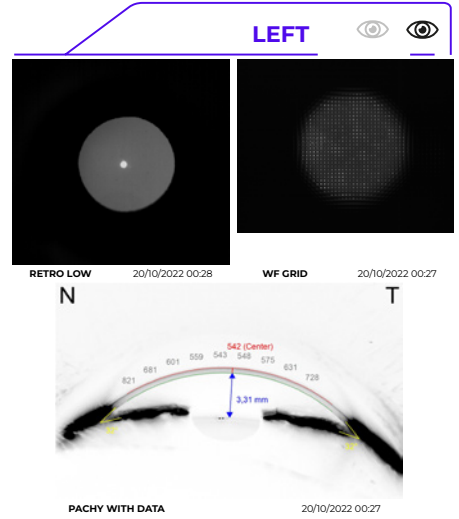
\* The axial, tangential and elevation maps displayed are related to the anterior corneal surface



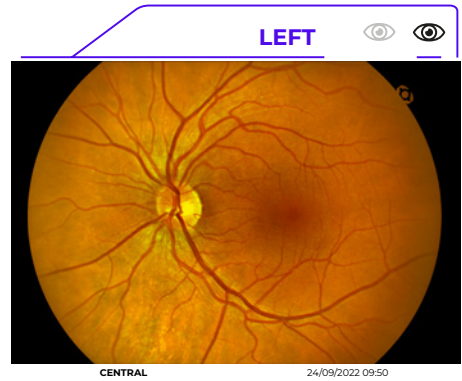




RIGHT	GLAUCOMA/ CATARACT	LEFT
522 $\mu$ m	CCT	542 $\mu$ m
31	NASAL ANGLE	32
32	TEMPORAL ANGLE	32
17.0 mmHg	IOP	15.0 mmHg
17.0 mmHg	IOPc	15.0 mmHg
IOPc has been calculated with Ehlers 1 correction factor		
Exam date: 20/10/2022		



RIGHT	FUNDUS	LEFT
0,15	CDR	0,17
0,41	VERT. CDR	0,38
Exam date: 24/09/2022		



# Technical specifications

## DIMENSIONS:

WIDTH	660 mm
DEPTH	420 mm
HEIGHT	560 mm
WEIGHT	32 Kg



### Pachymetry, IC (iridocorneal) angle and pupillometry

Method	Static horizontal scan with the Scheimpflug camera
Pachymeter measuring range	150µm-1300µm
Accuracy	< 5µm
IC angle measuring range	0°-60°
IC resolution	0.1°
Pupil illumination	Blue light 455 nm

### Retroillumination

#### Corneal topography by specular reflection

Number of rings	24
Number of measuring points	6,144
Number of points analyzed	More than 100,000
Diameter of covered corneal area at 43D	From 0.75 mm to more than 10 mm
Measurement range	From 37.5 D to 56 D
Repeatability	0.03 mm
Method	Placido rings

### Dry Eye screening

- Non Invasive Break-Up Time (NIBUT)
- Measurement of tear meniscus height
- Scleral picture

### Tonometer

Measurement range	Calibrated range 7 - 44 mmHg
-------------------	------------------------------

### General

Alignment	XYZ automatic
Display	15.6" (1366 x 768 px) TFT screen Multi-touch screen
Observation area	ø 14 mm
Medical device directive	EC MDD 93/42/EC modified by directive 2007/47/EC
Output	RS232 / USB / VGA / LAN / HDMI / DP

### Power mapping and refraction

Spherical power range	-20D to +20D
Cylinder power range	0D to 38D
Axis	0 to 180°
Measuring area	Min. ø 2mm - Max. 7 mm (3 zones)
Number of measuring points	1,400 points for 7 mm pupil at 0D
Acquisition time	0.2 sec
Method	Shack-Hartmann

### Fundus

Angle of view	45°
Resolution	6 Mpix
Optical resolution	> 60 lines/mm

VISIONIX



VX 650




# Distributed by



## Singapore

**VITOP PTE.LTD.** ROC 201302046D


15 Lorong 8 Toa Payoh Braddell Tech, #04-03 Singapore 319262  
Office +65 6316 4749 Customer Service +65 9850 7688  
Email enquiry@vitop.com.sg

Cert No SCS 101469G 

## Malaysia

**VITOP MALAYSIA SDN. BHD.** ROC 2015010280069

75 Jalan 11/62A Bandar Menjalara Kuala Lumpur, Malaysia 52200  
Office +603 6262 0001 Customer Service +6010 208 9580  
Email enquiry@vitop.com.my

Cert No GD230716901 

**Website: [www.vitop.com.sg](http://www.vitop.com.sg)**



INNOVATION TO UNLOCK YOUR POTENTIAL

**VISIONIX INTERNATIONAL= SAS**

2 Rue Roger Bonnet, 27340 Pont-de-l'Arche - France  
Tél. + 33 232 989 132 - Fax + 33 235 020 294  
contact@visionix.com

[www.visionix.com](http://www.visionix.com)